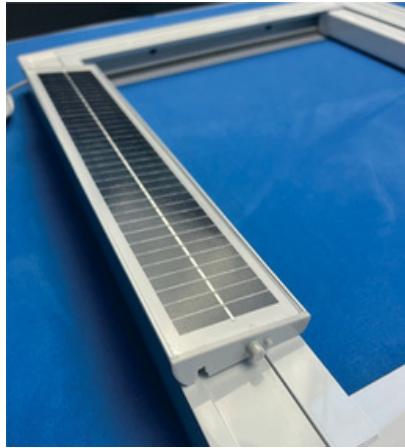


# Electrics

## Battery Solar Powered Option

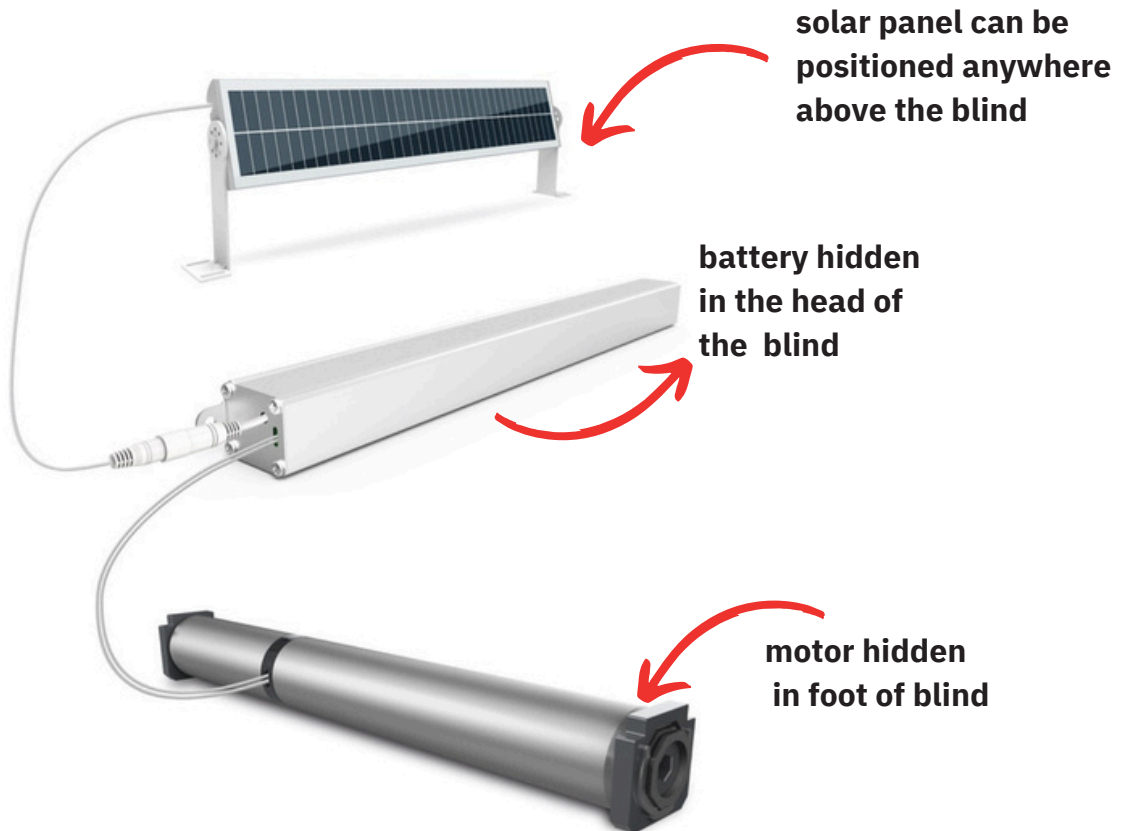


charging port



Foot Of Blind  
(where motor is situated)

The battery is hidden in the **head** of the blind. It comes pre charged. It is trickle charged by a solar panel which you sit on the top of the blind. Every now and then you should attach the blind to the charger provided to give the blind a charge. The charging port is discrete and on the underside of the blind. There is another charging port above the blind for the solar panel. The solar panel cable is approx 2.5mts long, so you could locate the solar panel in almost any position, however, it's quite wise to locate it in a position where it will collect the most light.

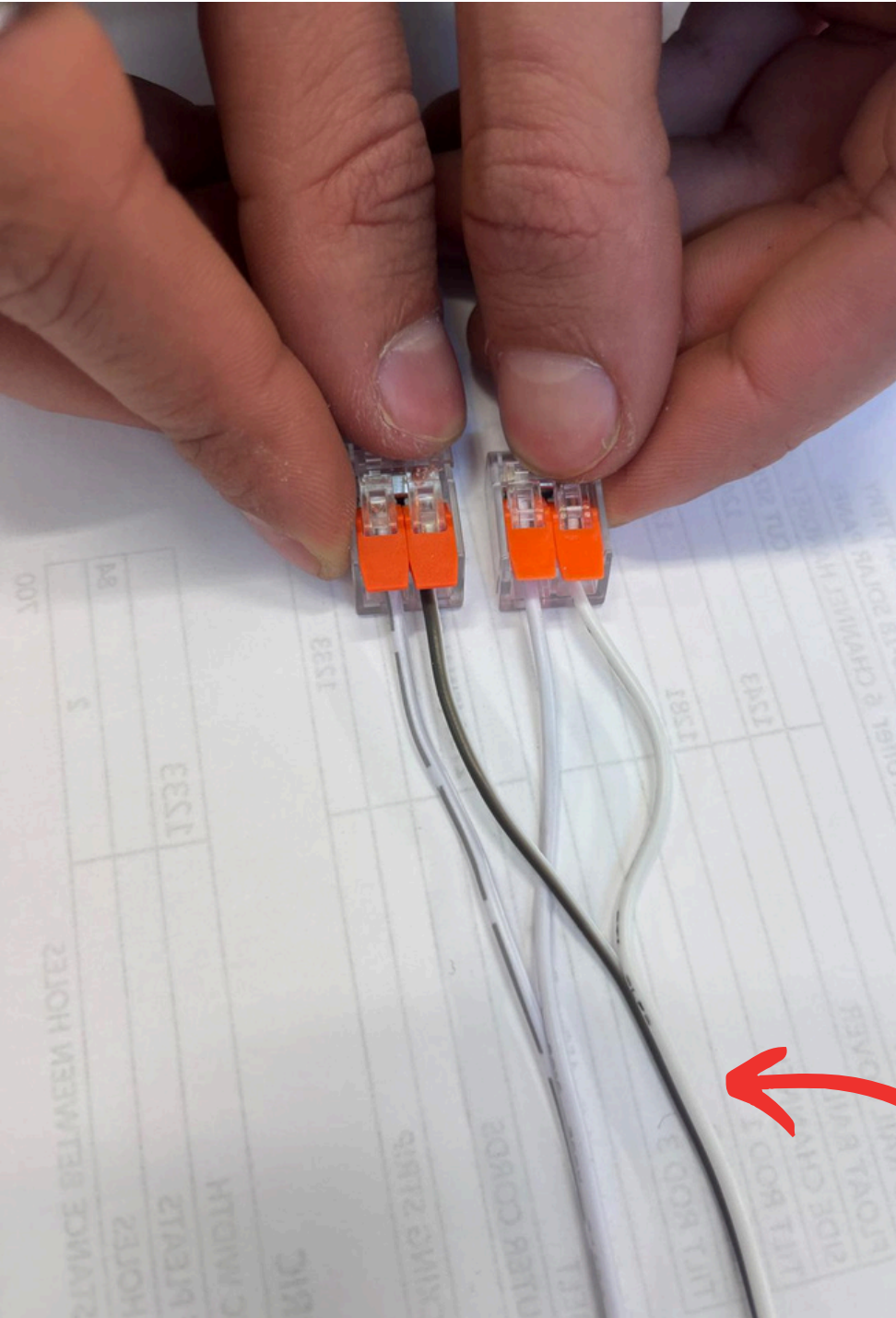


Our blinds come with the NOVO motor as standard and Somfy motor if requested. These instructions are geared towards the novo motor but the Somfy motor works on the same principles and should be similar to set up

# Electrics

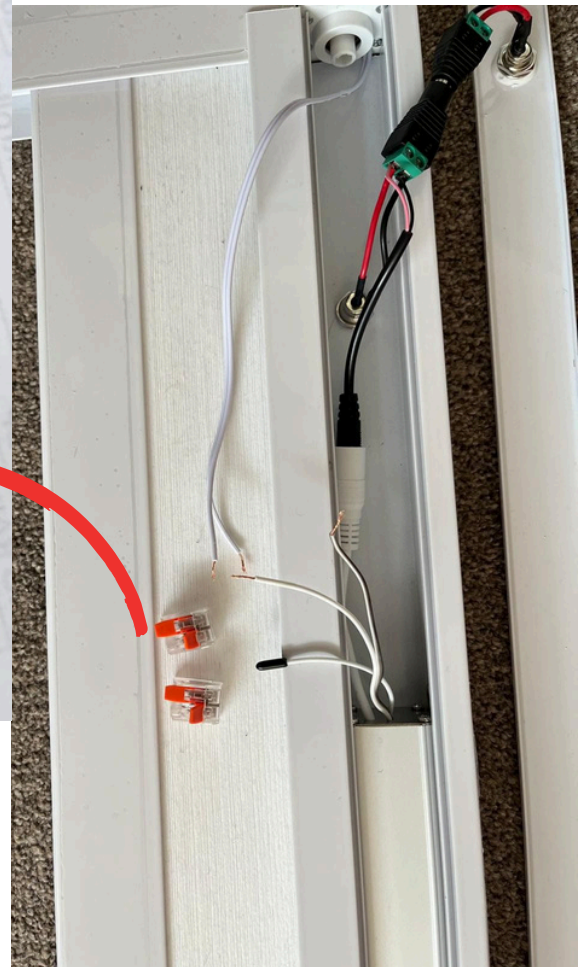
## Battery Solar Powered Option

How to attach the wires for the battery operated blind



**Black to Black**  
**White to White**

**Black to Black**  
**White to White**



# Electrics

## Mains Powered Option



Transformer



Head Of Blind



The mains transformer is hidden away in the head box at the fabric end of the blind. After the initial assembly, leave the cover off, or simple remove it if it's already fitted.

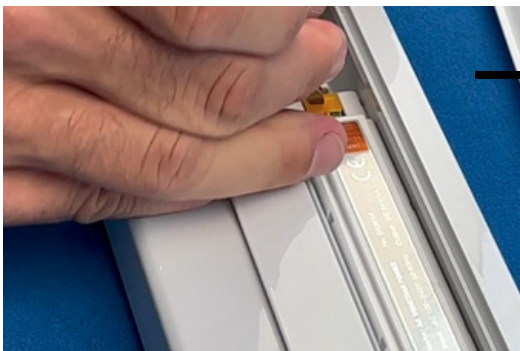
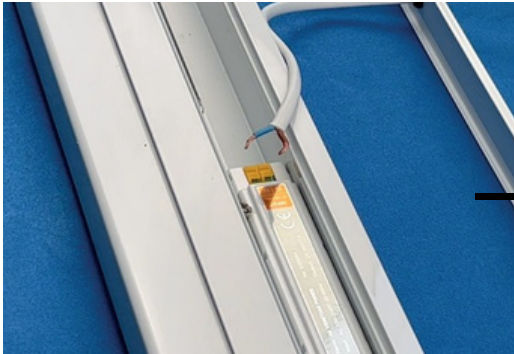
To remove it, we suggest a flat blunt tool Cable Exit Position such as a filler knife rather than a screwdriver. Be sure not to bend the cover when removing it. It just needs some agitation rather than brute force to remove it. Use a flat head screwdriver to push the yellow terminal springs in the direction shown. This will open the cable hole giving you enough space to push your power cable into the port. Release the terminal springs to lock the cable in place. Fit the cover strip profile into place when done.

**Your AC 240v cable goes into the INPUT side of the transformer.**

**The + terminal is LIVE The - terminal is NEUTRAL**

**A 0.75mm twin-core flex cable is more than adequate for the installation. The transformer is 'double insulated', it doesn't have an earth connection.**

[Scan for assembly instructions or click here](#)



**Our blinds come with the NOVO motor as standard and Somfy motor if requested. These instructions are geared towards the novo motor but the Somfy motor works on the same principles and should be similar to set up**

## Handsets

### Remote Control

Connect up to 6 blinds with this handset



### Switch

This single channel switch is a remote transmitter and doesn't need cables. Simply screw it to the wall. Only compatible with the mains powered motor.



**Our blinds come with the NOVO motor as standard and Somfy motor if requested. These instructions are geared towards the novo motor but the Somfy motor works on the same principles and should be similar to set up**