

Concealed ceiling blinds

WHAT IS CONCEALING BLINDS?

Concealing blinds is the act of hiding them so that only the blinds bottom bar's underside is visible when the blind is not in use.

HOW DO YOU CONCEAL BLINDS?

You can conceal roof blinds by constructing a sturdy shelf within your roof space which the blind can sit on. This shelf can be plaster-boarded and plastered to match the surrounding walls to create a seamless and stylish finish.



WHEN SHOULD YOU CONSIDER CONCEALING YOUR BLINDS?

Our customers typically come to us when they are already experiencing problems with their roof lantern windows and they retro-fit the LanternLITE™ blind using the provided “angles” which act as a shelf to support the blind.

If however you are in the build stage or are planning your build, then you have the luxury to be able to recess your blinds and conceal them.

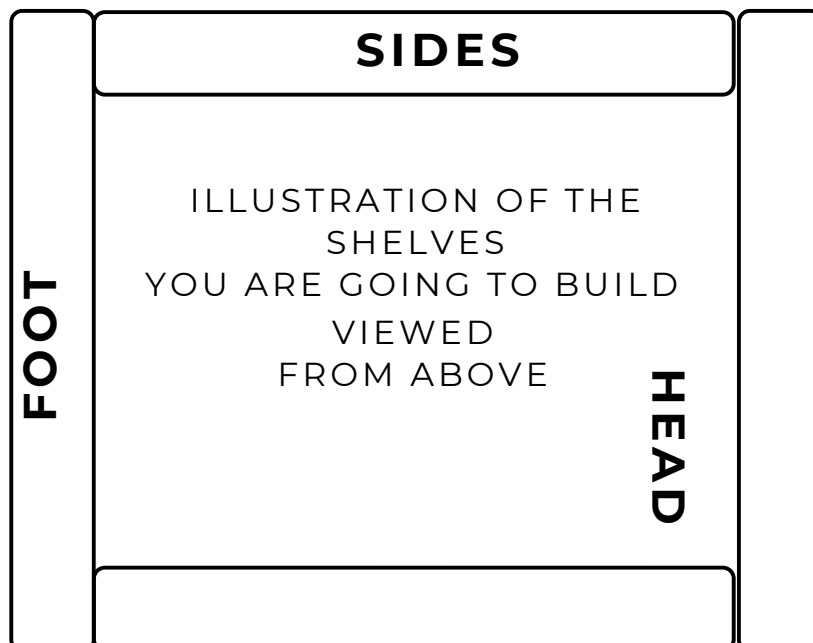
HOW DO I RECESS THE BLIND?

If you are fortunate enough to be in the position where you are at the build stage, you may very well be able to conceal your blind.

Things to note:-

- We recommend that you **make the shelf open at the top** (makes the blind easier to fit and gives easy access if there are any issues).
- You may have to change your installation method from the method shown in our fitting instructions. Our instructions advise to build your blind on the floor and lift into the recess. This will not be possible if your blind is recessed.
- You will have to organise a safe work station e.g a tower where the blind can be assembled in situ and fitted at height.
- We have created a handy table below which gives you the optimal size to make your built in shelves.
- These shelves will hide the hardware of the blind and also the fabric when it is stacked when the blind is open.

Blind Type	Head	Foot	Sides
Zip Blinds	12cm deep	12cm deep	7.5cm deep
Honeycomb (with guidewires)	15cm deep	5cm deep	5cm deep
Honeycomb* (Openview)	5cm deep	15cm deep	5cm deep



Concealing the Electric Honeycomb Openview Blind

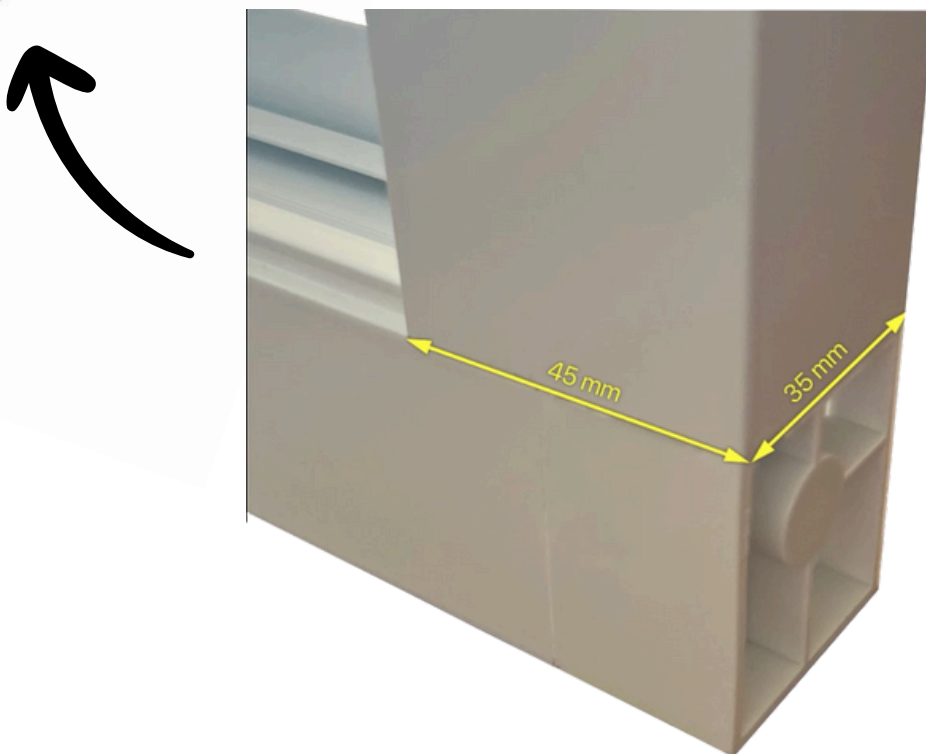
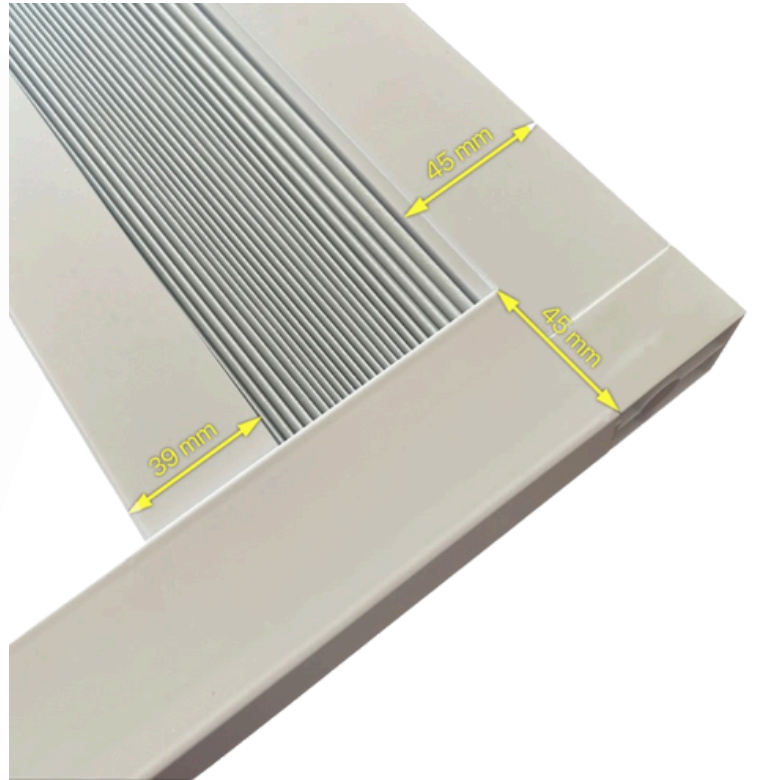
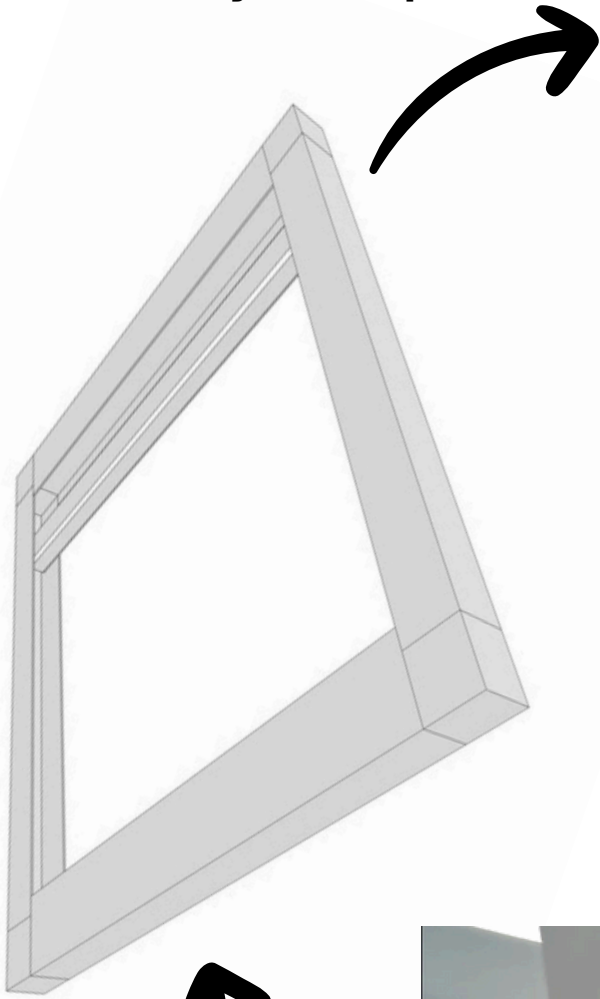


[VIEW CASE STUDY](#) >



Concealing the Electric Honeycomb Openview Blind

Honeycomb Openview Electric product dimensions



Concealing the Electric Honeycomb Openview Blind

Stacking Heights

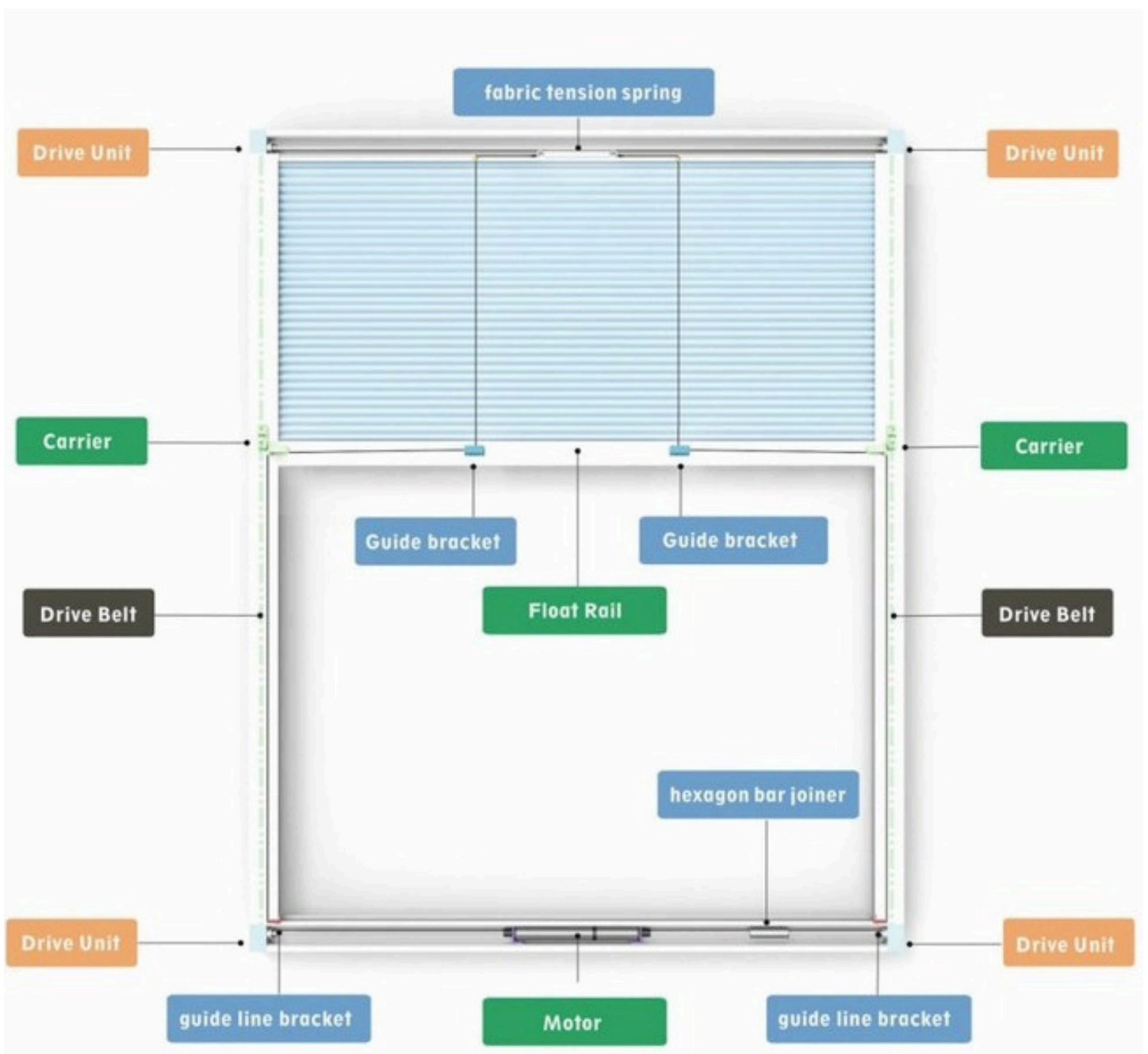
From 500 to 1100, the stack is within 87mm

NB fabric stacking is approximate

Drop	Stacking (mm)
1400	93
1600	97
1800	102
2000	106
2200	110
2400	115
2600	119
2800	123
3000	128
3200	132
3400	137
3600	141
3800	146
4000	150

Concealing the Electric Honeycomb Openview Blind

Blind Anatomy



Concealing the Zip Roller Blind

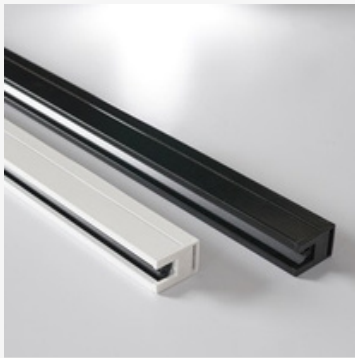


Concealing the Zip Roller Blind

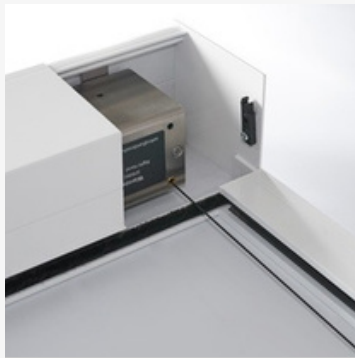


zip roller BLIND DIMENSIONS

MAX SIZE
9m²



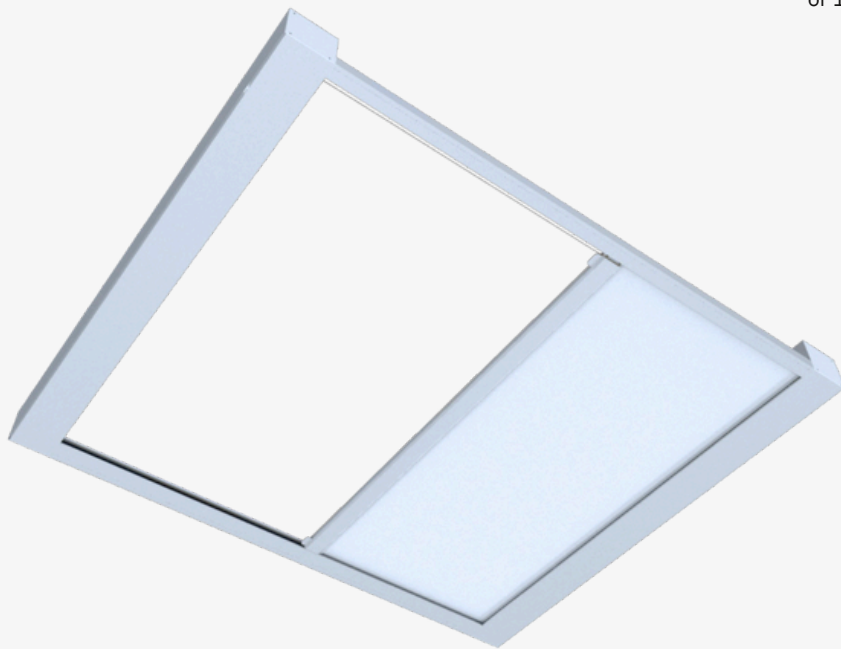
FABRIC ZIP SIDE CHANNELS
 – Slim 35mm wide channel
 – Zipped-edge fabric retention
 – Wider 56mm channel also available



CONSTANT TENSION SPRING UNITS
 – 4kg pull force per unit
 – Tension is constant throughout extensions and retraction
 – Fabric under tension at any angle



HEADBOXES
 – 100 x 92.5mm and 125 x 117.5mm headboxes to suit blind size (see bottom right of the page)
 – Connects to side channel with sturdy steel legs
 – Fascia removable within 100mm or 125mm



CONTROL OPTIONS

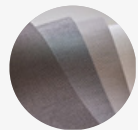
MOTORISATION CONTROLS

- Hardwired Switch
- Radio remote control
- Digital and IP communication
- Integration and control systems



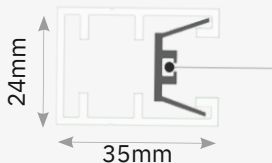
FABRIC OPTIONS

- Sunscreen fabrics for glare control with views out
- Blackout fabrics for room darkening



SYSTEM SPECIFICATION

FABRIC RETENTION SIDE CHANNELS



LANTERNLITE™ HEADBOX DIMENSIONS

